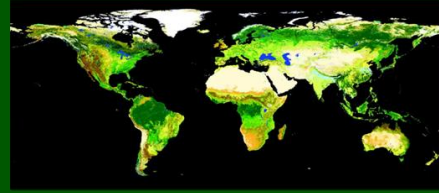


World Resources Simulation Center



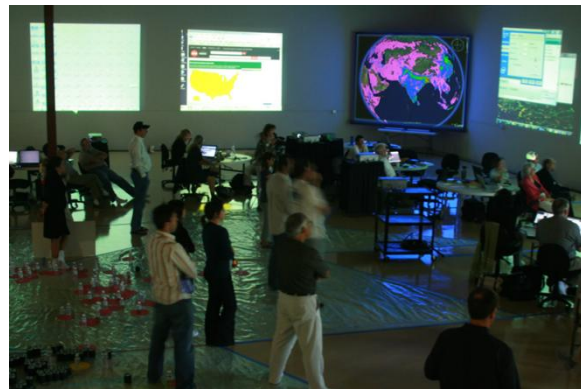
Phase IV – Ongoing Demonstration Facility

In order to expedite the availability of the WRSC as a critical resource, we are now raising capital to create a working scale version of the Center as a two year ongoing demonstration of the capabilities of the fully funded WRSC. This phase will involve creating a full time demonstration environment using off-the-shelf technology of projectors and computers, utilizing an available flexspace or warehouse. We could then begin to do the work of the WRSC, gaining technological know-how and hosting smaller scale collaborative events to test and further refine the processes of the Center. This demonstration facility will lay the groundwork for gaining more institutional and corporate partners and total funding for the full scale World Resources Simulation Center in Phase V.

GENI's current staff and budget of approximately \$204,000 will be moved into the new WRSC facility. We estimate the cost of equipping the demonstration facility to be approximately \$47,000. An additional \$400,000 per year in addition to GENI's current budget would be needed for rent, operations and personnel. We project that the first year at the demo facility will culminate in achieving the support necessary to transition to the full scale center, with the second year dedicated to continuing the work of the WRSC while transitioning into the fully funded center. An investment of \$447,000 would insure sufficient funds to open and operate the demonstration facility until reaching a positive cash flow in the second quarter of the second year.

Pictured below are photos from our Prototype (2009) and month-long Collaborative (2010) Events. Utilizing projectors, attendees' laptops and a 10,000 sq/ft warehouse, we tested out the concept and process of collaborative decision-making on global, national and regional issues in an immersive, visual environment. Energy & Water Sustainability was the focus in 2010.

We envision this ongoing demonstration facility to be similarly outfitted as our previous events, but designed and set-up to perform the actual work of the WRSC before moving into a more permanent facility.



For expressions of interest, please contact Peter Meisen at GENI, (619) 595-0139, peter@geni.org